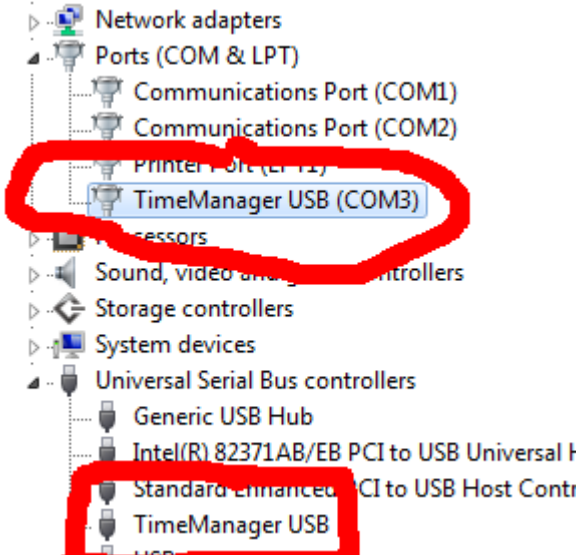


## TimeManager driver update

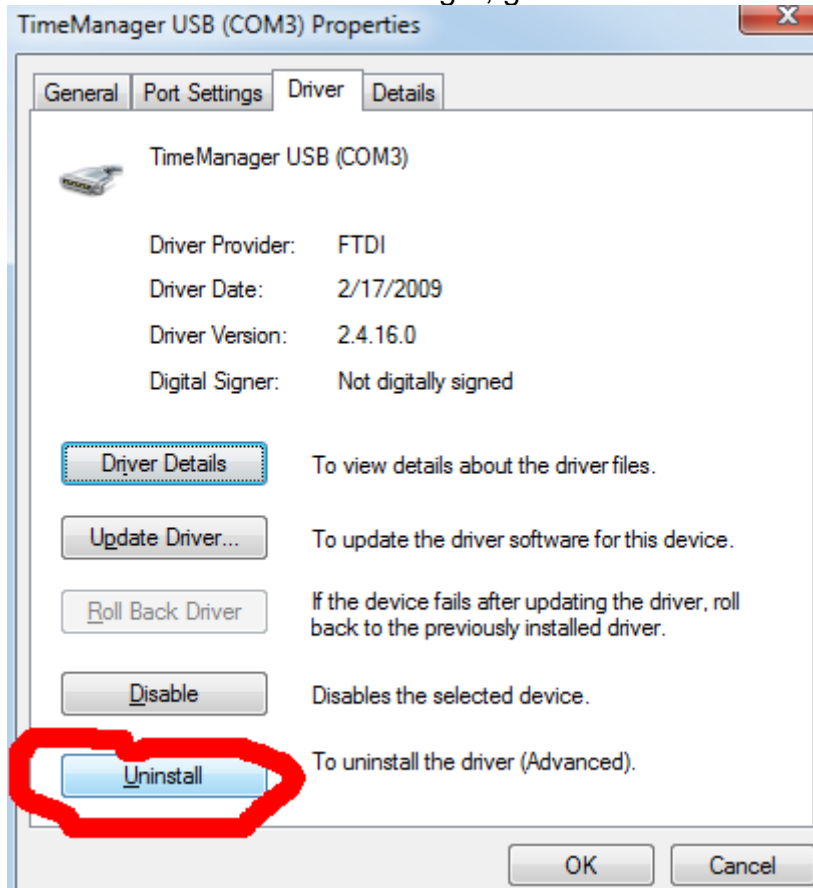
Hint: You will need administrator rights to install/update a driver!

1. Open the device manager. There you can see two TimeManager drivers:



Both drivers have to be updated one after another.

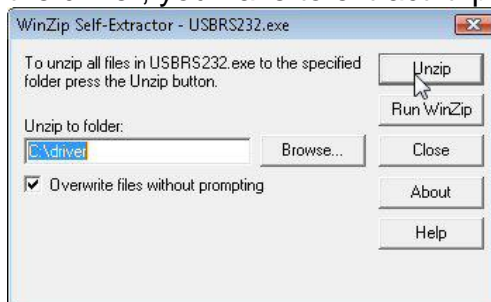
2. Double click on the TimeManager, go to the driver tab. Click uninstall



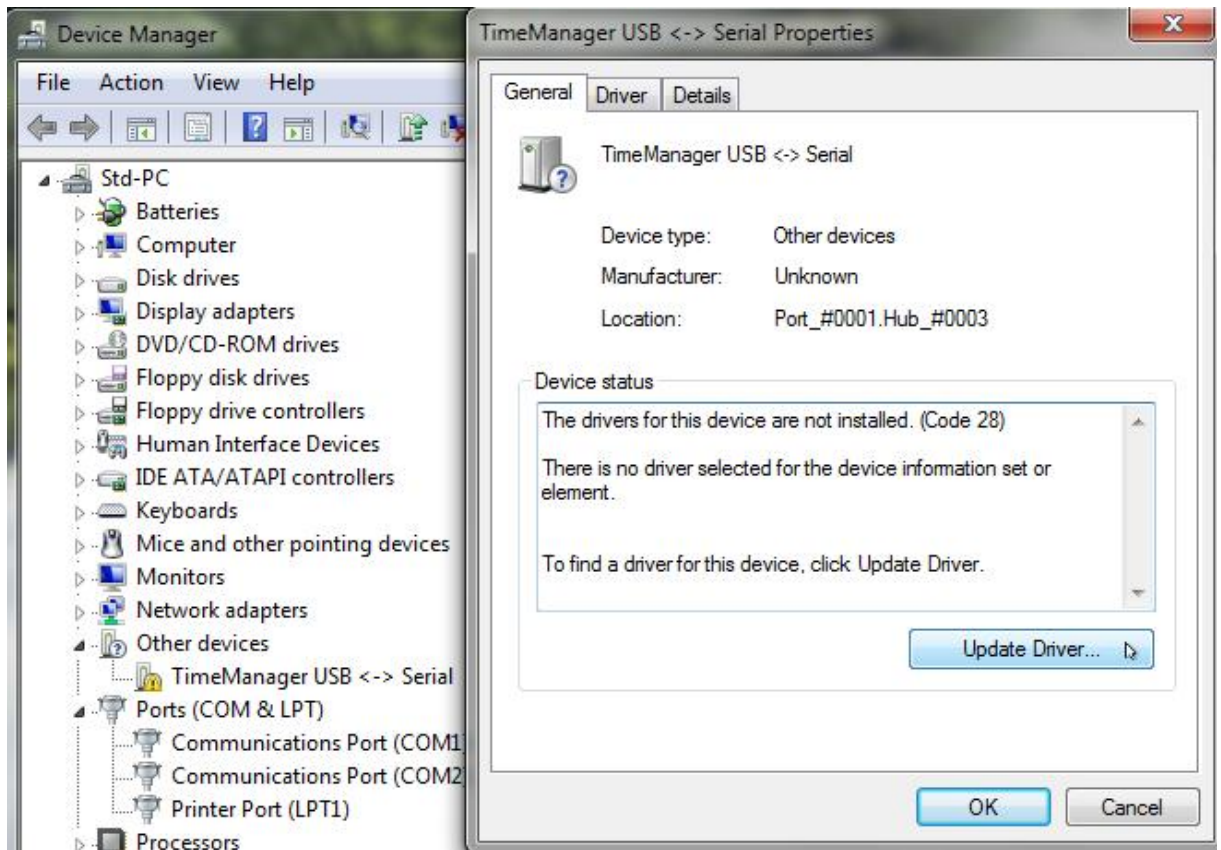
3. check "Delete driver software for this device" and press ok



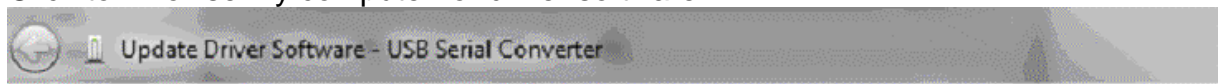
4. This have to be done with both drivers. Continue with the 2<sup>nd</sup>
5. After de-installing 2<sup>nd</sup> driver press action/Scan for hardware changes or switch the TimeManager on and off again.
6. Put a **ALGE** CD in your PC. If you do not have an **Alge** CD, you have to download it from the **Alge** Homepage [www.alge-timing.com](http://www.alge-timing.com).After downloading the driver, you have to extract it: press unzip



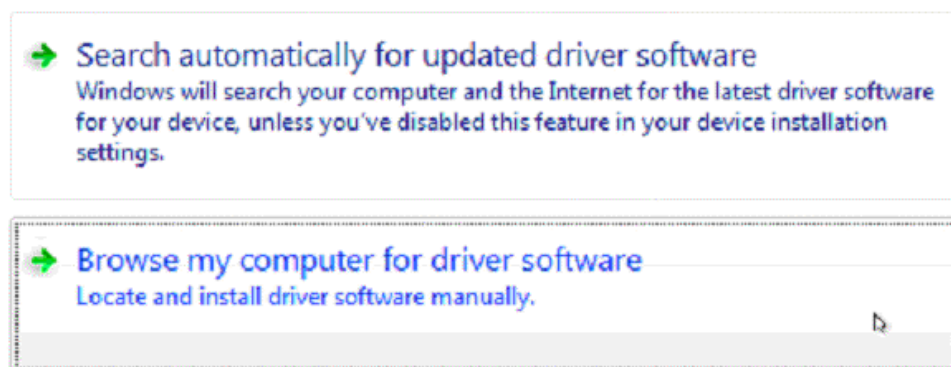
7. Connect the Timy with your PC and switch it on.  
Please wait until Windows finished searching for the driver.  
If Windows does not find the automatically, open the device manager and make a double click to "Unknown device". Click to „Locate and install driver”



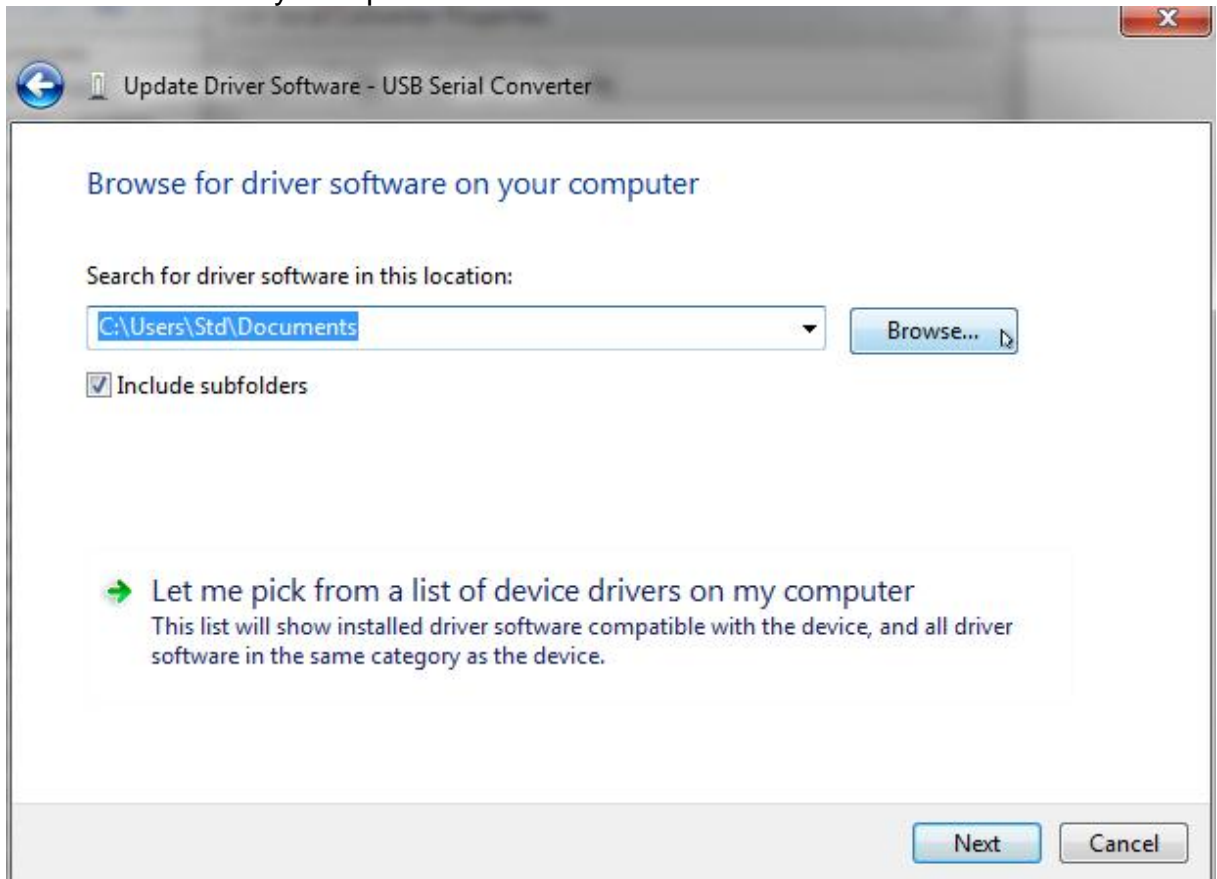
8. Click to "Browse my computer for driver software"



How do you want to search for driver software?



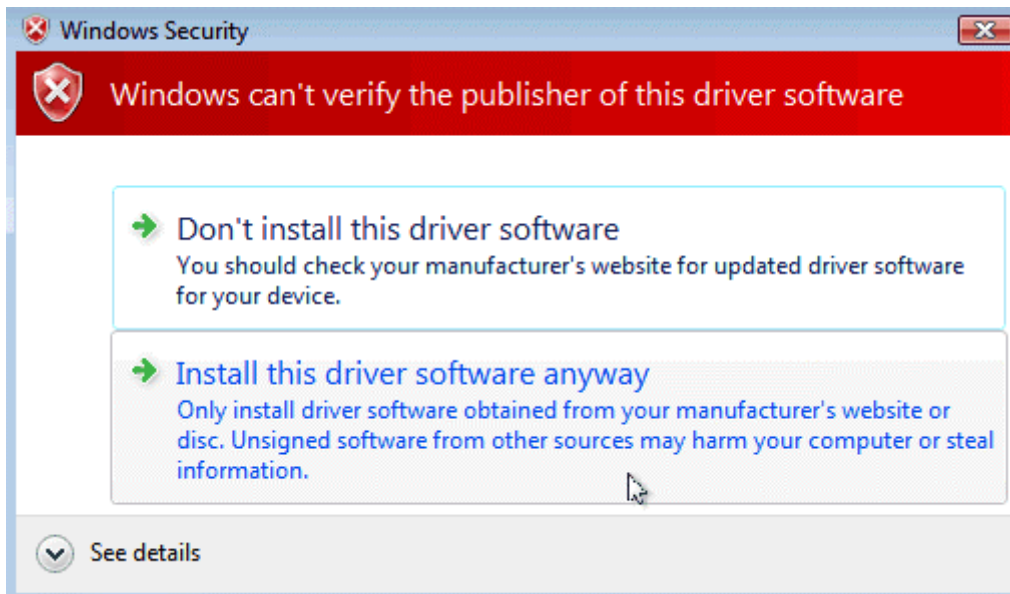
9. Click to “Browse my Computer for driver software”



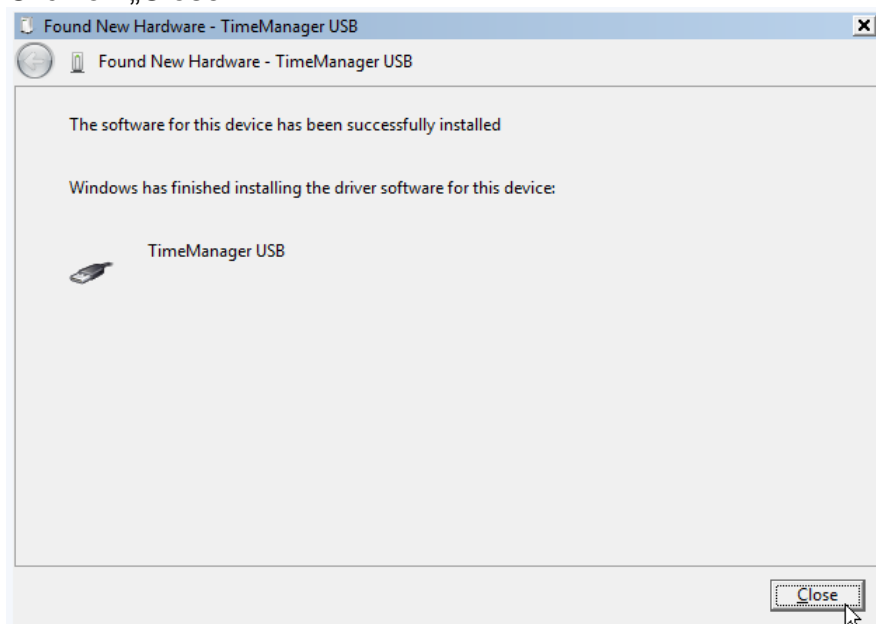
10. Click to “search “ Then choose the driver location and click “ok” and “next”



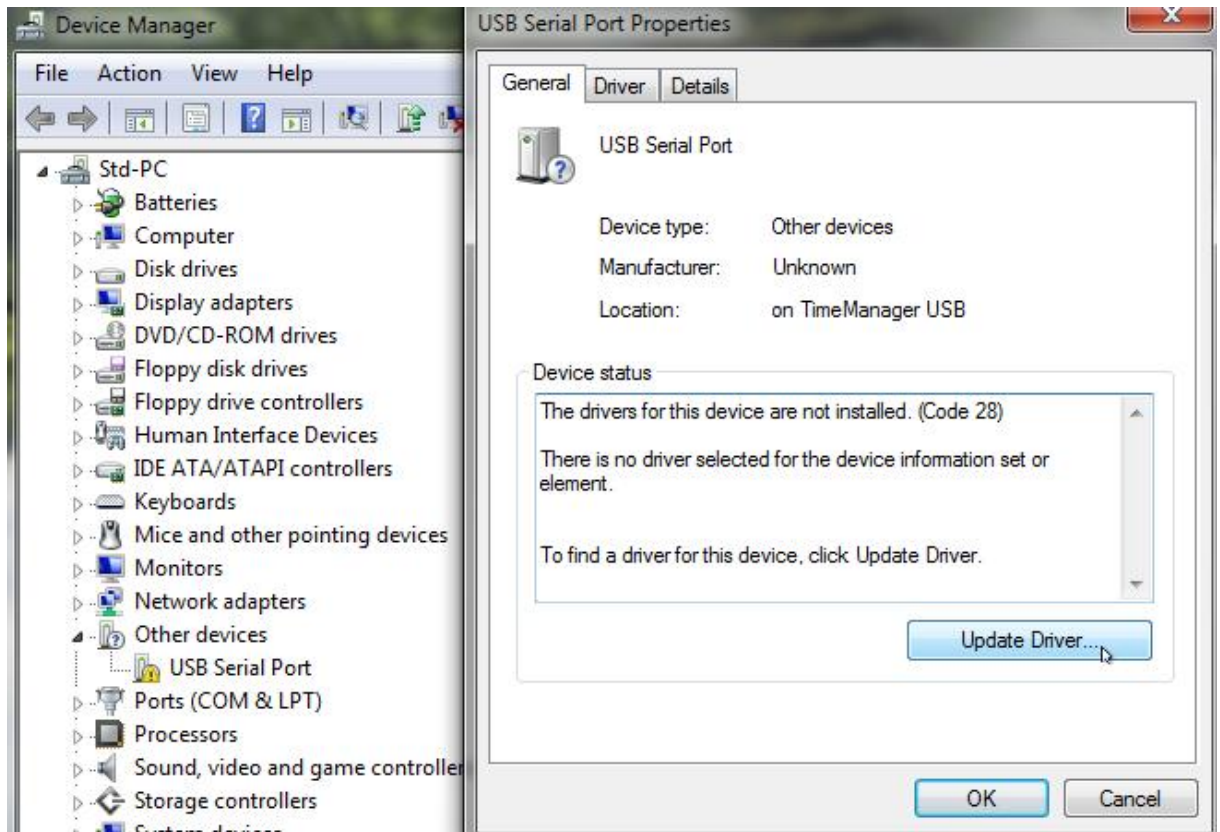
11. Please confirm that you really want to install this driver and click to “Install this driver software anyway”



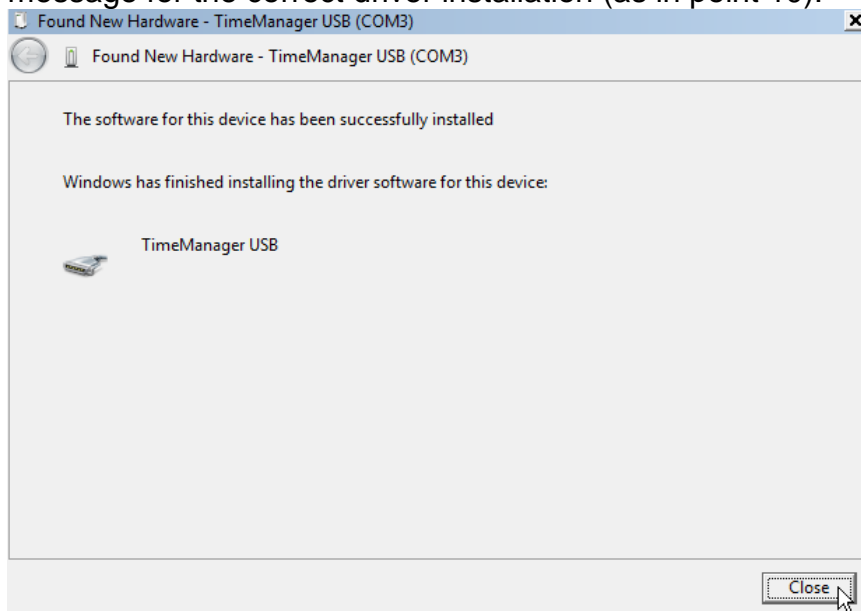
12. You should get now a message that the driver is installed successfully. Click on „Close“



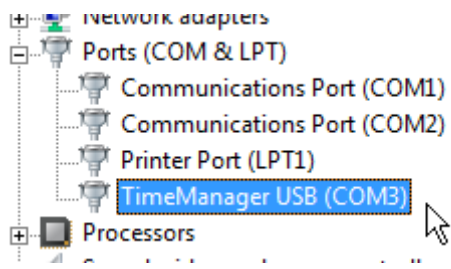
13. Now the driver for the virtual COM Port needs to be installed. Please make a double-click to „USB Serial Port“. Then click to „Update Driver“.



14. Follow the steps described in point 3 to 7. At the end you should get the message for the correct driver installation (as in point 10):



15. At the device manager you can validate the correct installation and on which COM Port the TimeManager is connected.



The driver is now ready for use.