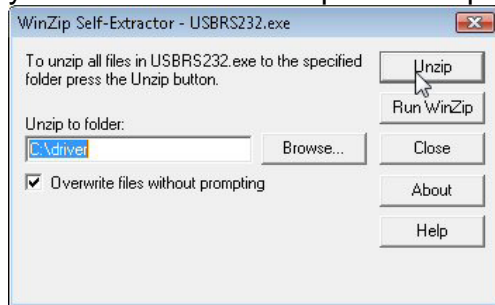


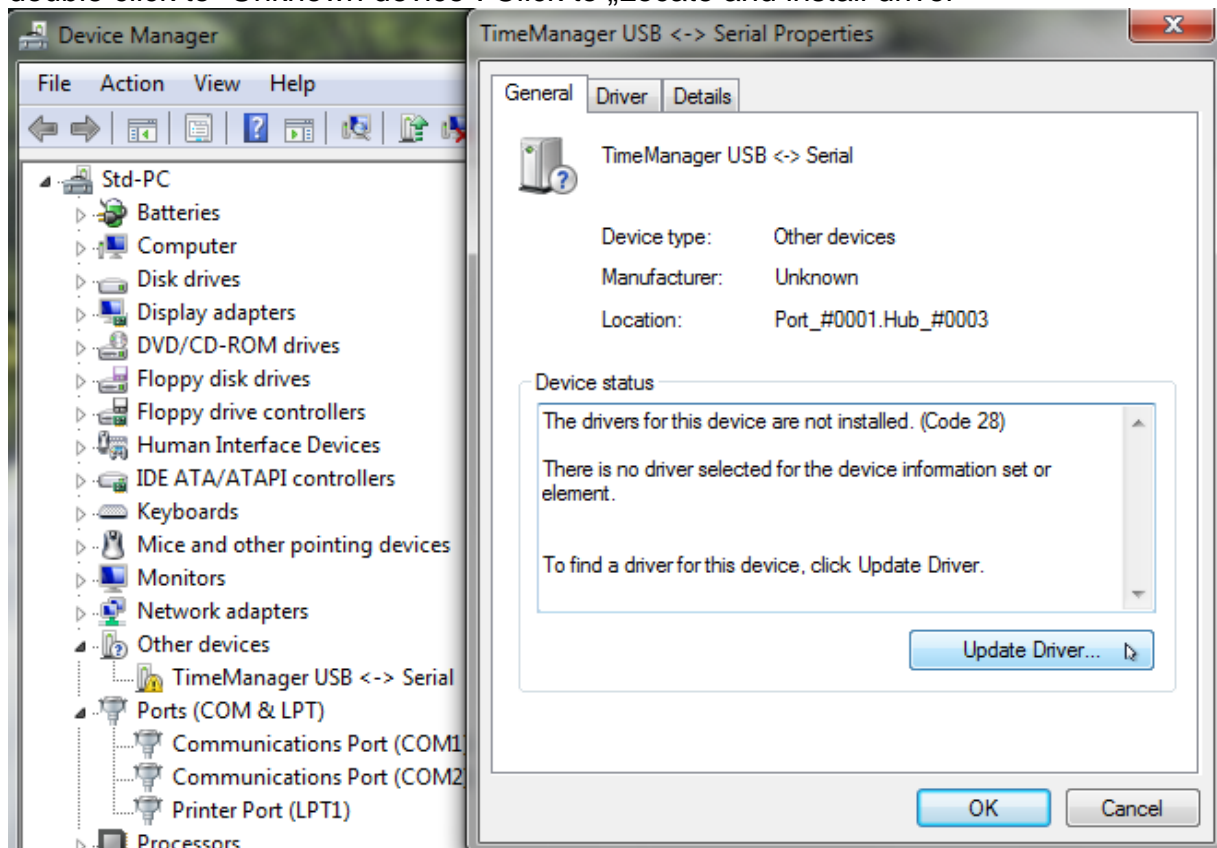
TimeManager driver installation (Windows 7)

Hint: You will need administrator rights to install a driver!

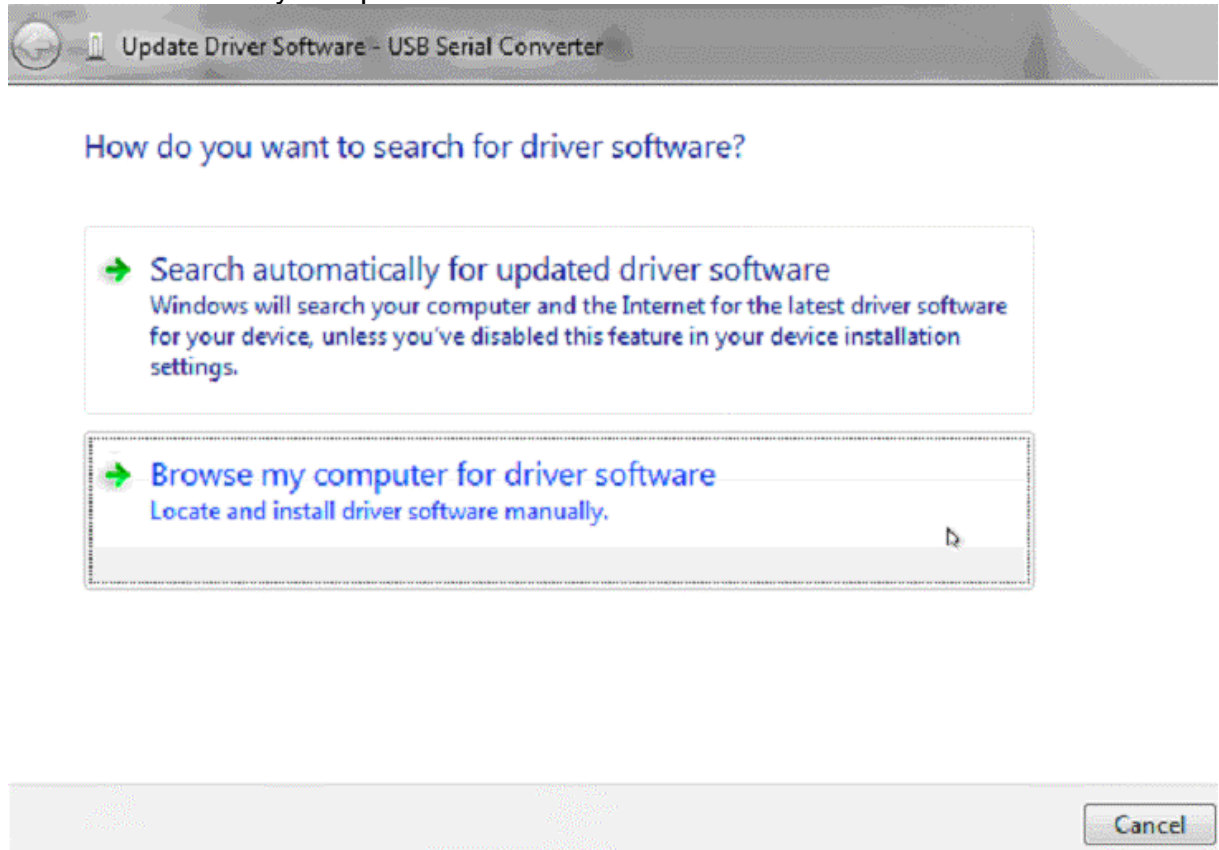
1. Put a **ALGE** CD in your PC. If you do not have an **Alge** CD, you have to download it from the **Alge** Homepage www.alge-timing.com. After downloading the driver, you have to extract it: press unzip



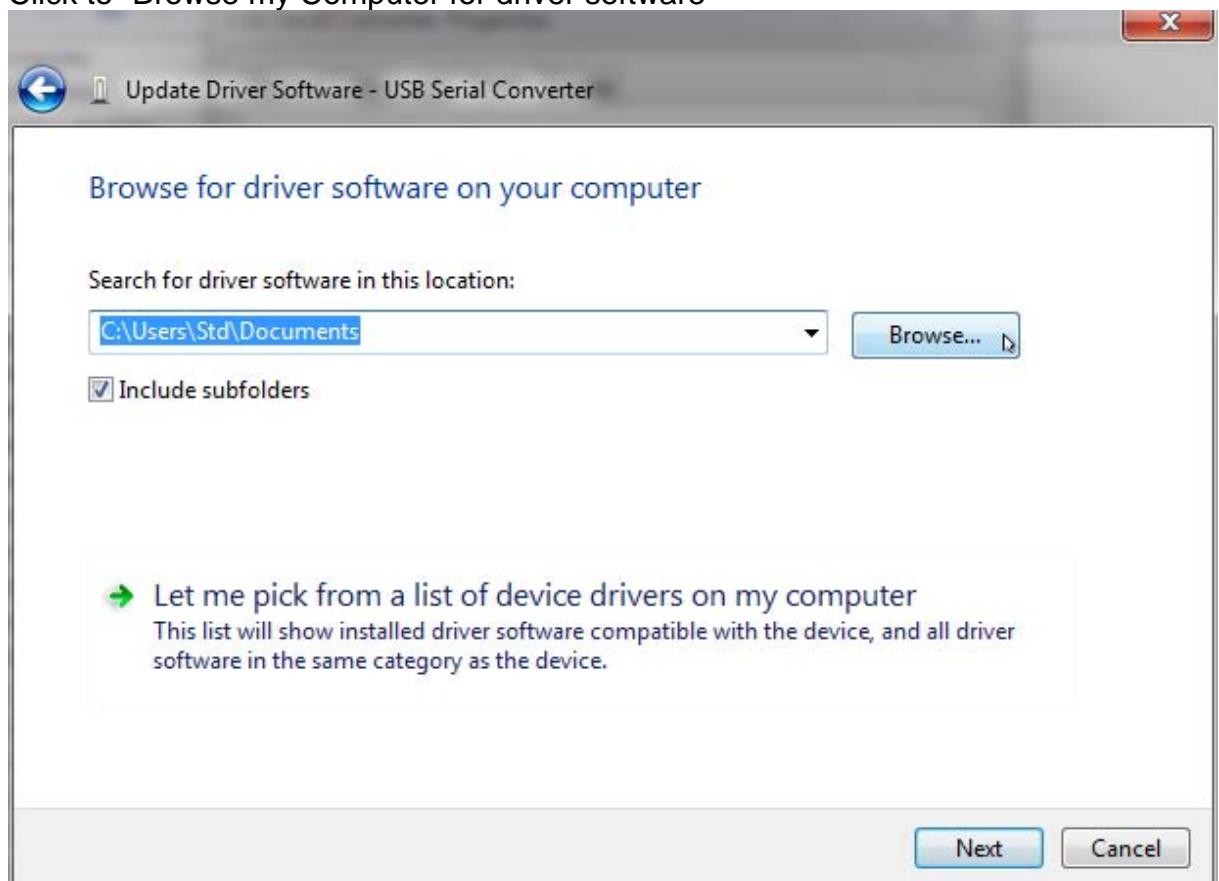
2. Connect the Timy with your PC and switch it on. Please wait until Windows finished searching for the driver. If Windows does not find the automatically, open the device manager and make a double click to "Unknown device". Click to „Locate and install driver”



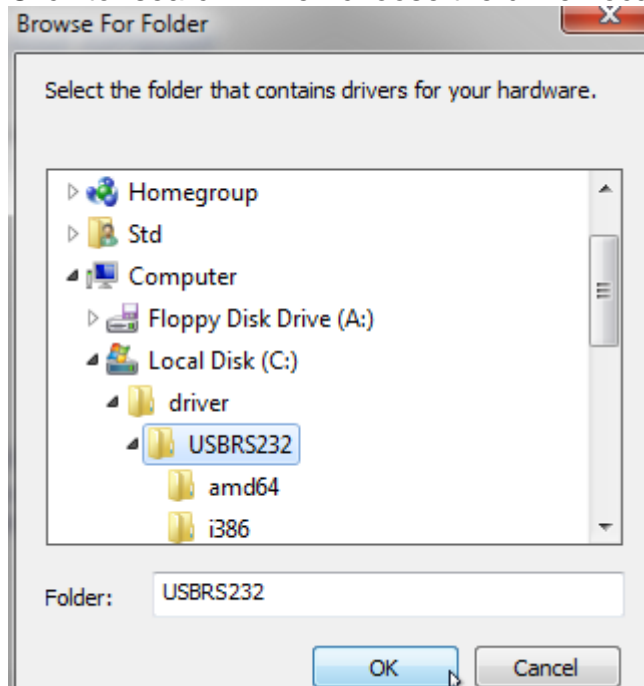
3. Click to "Browse my computer for driver software"



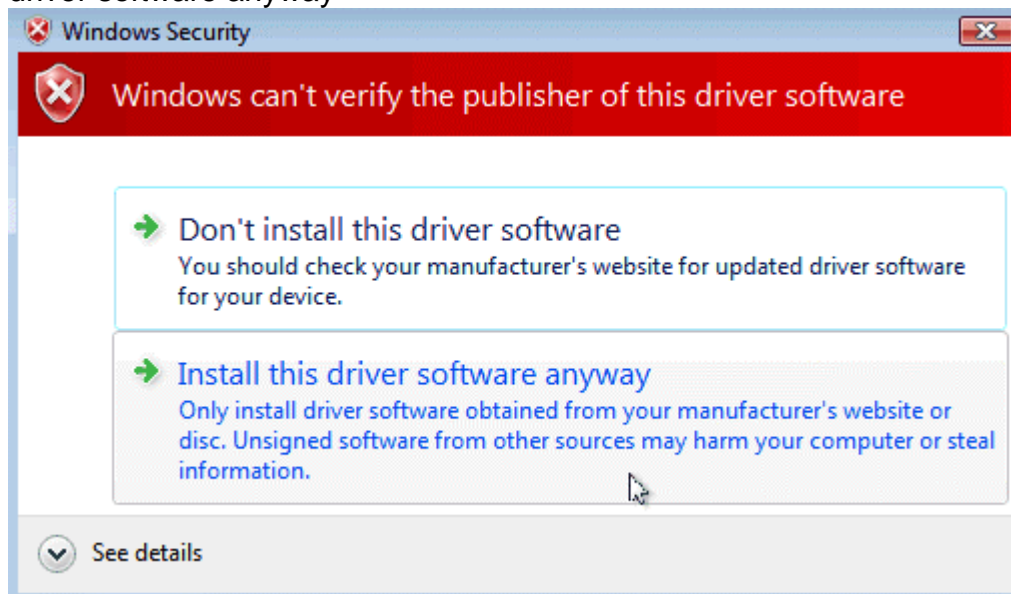
4. Click to "Browse my Computer for driver software"



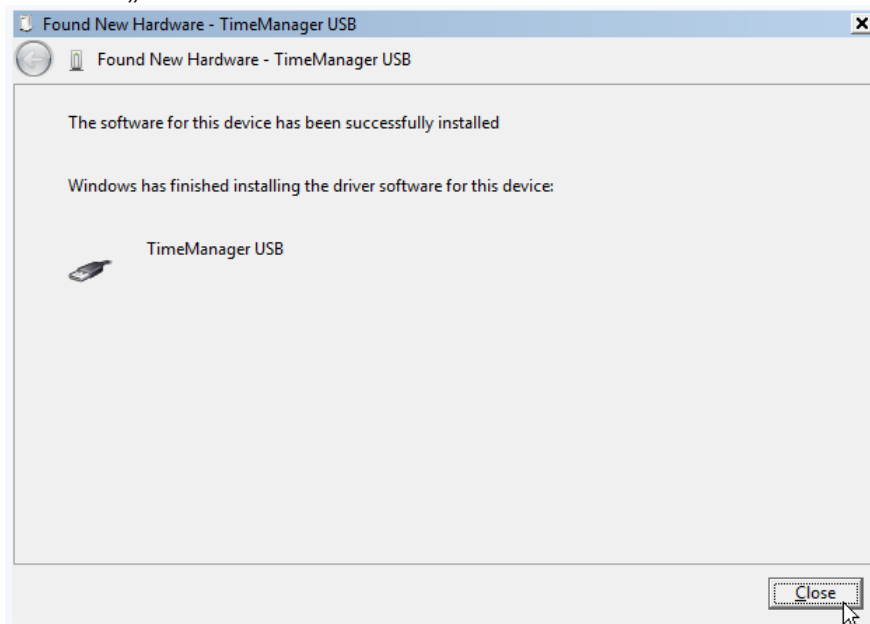
5. Click to “search “ Then choose the driver location and click “ok” and “next”



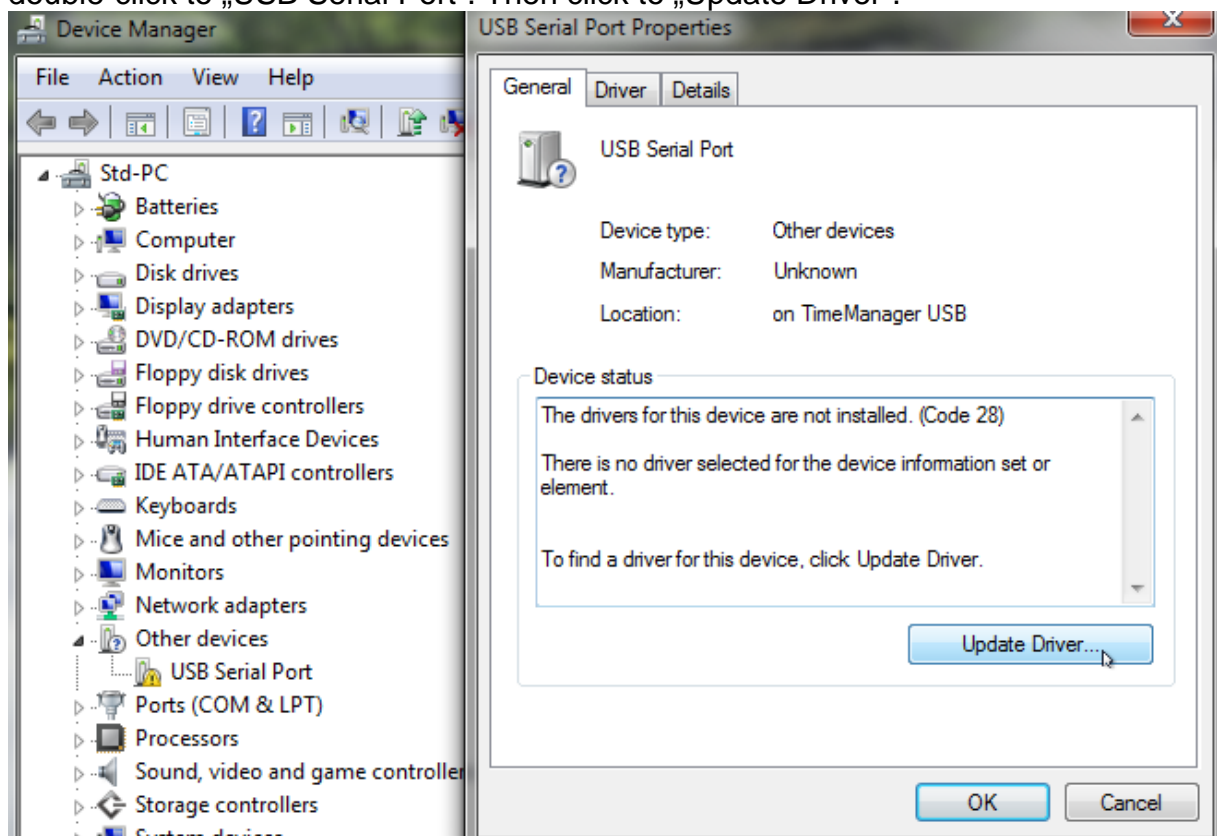
6. Please confirm that you really want to install this driver and click to “Install this driver software anyway”



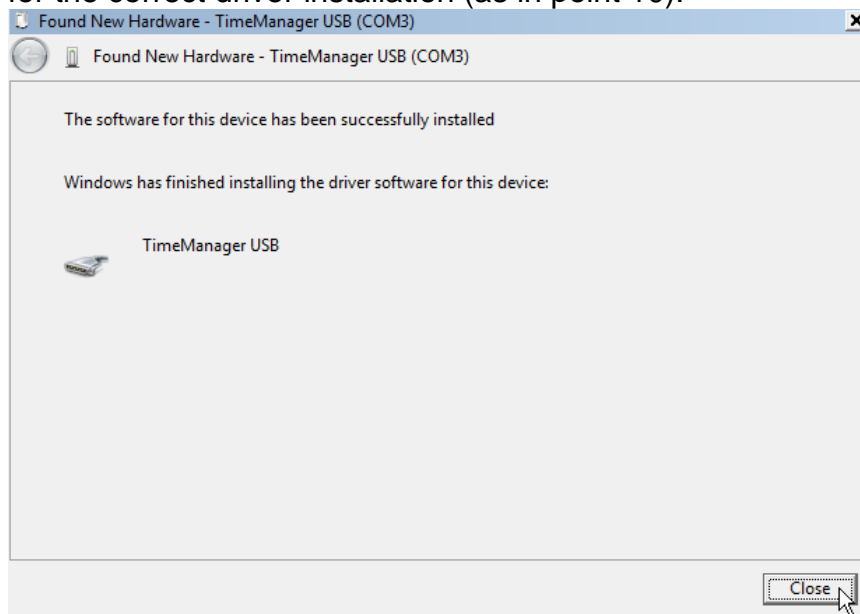
7. You should get now a message that the driver is installed successfully. Click on „Close“



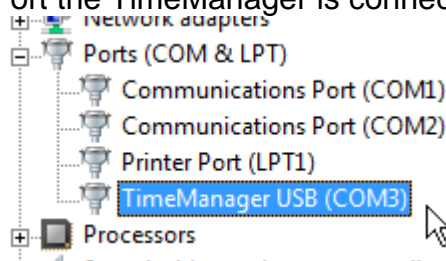
8. Now the driver for the virtual COM Port needs to be installed. Please make a double-click to „USB Serial Port“. Then click to „Update Driver“.



9. Follow the steps described in point 3 to 7. At the end you should get the message for the correct driver installation (as in point 10):



10. At the device manager you can validate the correct installation and on which COM Port the TimeManager is connected.



The driver is now ready for use.