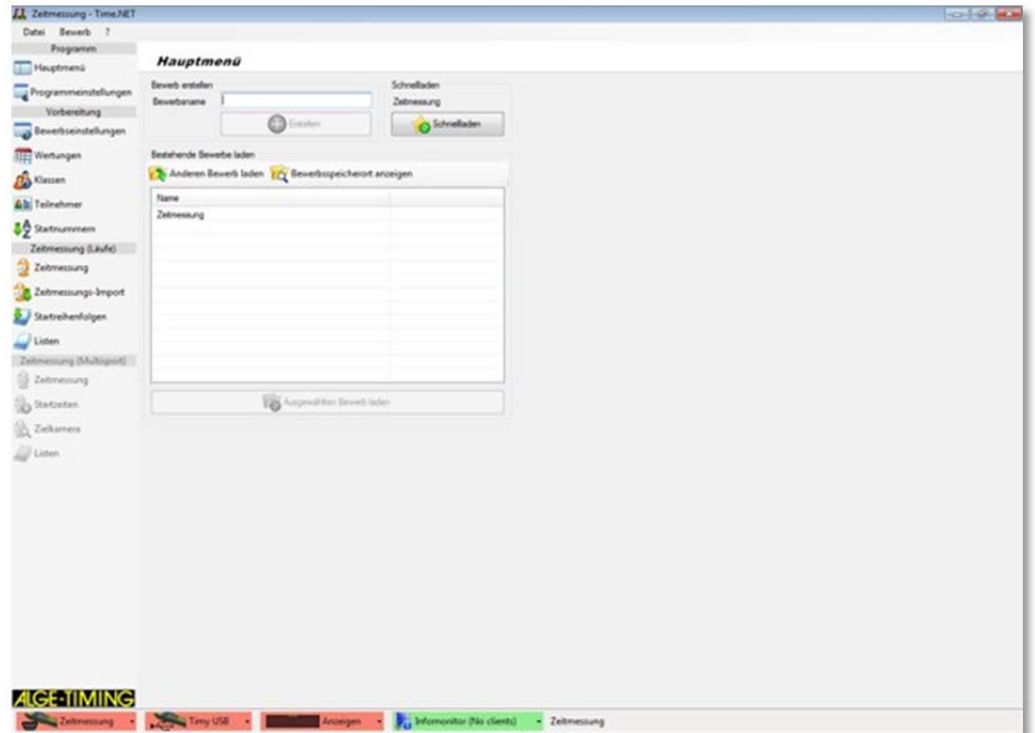


Time.NET 2

V2.0.4106



Installation

1 Copyright

Copyright © 2011 ALGE-TIMING GmbH
All rights reserved.

Time.NET 2 program is freeware and may be freely used, copied and forwarded, if the following conditions are met:

- You may use Time.NET 2 for private and professional purposes free of charge. However, you may not sell Time.NET 2, and you may not bundle Time.NET 2 with other software packages without the approval of ALGE-TIMING GmbH.
- You may offer Time.NET 2 for download on free websites.
- A written permission by ALGE-TIMING GmbH shall be required for all other types of publication.
- Even when passed on to third parties, Time.NET 2 shall always remain the property of ALGE-TIMING GmbH.
- Time.NET 2 shall have to remain unchanged. In particular, the program name as well as the name of ALGE-TIMING GmbH shall not be changed.

ALGE-TIMING GMBH SHALL NOT GUARANTEE THAT THE PROGRAM IS FREE FROM FAULTS, THAT IT OPERATES WITHOUT INTERRUPTIONS, THAT THE PROGRAM MEETS YOUR DEMANDS, THAT ERRORS IN THE SOFTWARE ARE REMEDIED OR THAT NEW VERSIONS AND/OR UPGRADES OF THE PROGRAM ARE RENDERED AVAILABLE.

THE PROGRAM IS SUPPLIED "AS IS" WITHOUT ANY GUARANTEES OF ANY KIND.

THE USER ACCEPTS THAT THE PROGRAM AND ITS PERFORMANCE AS WELL AS THE DOCUMENTATION SHALL BE USED AT OWN RISK EXCLUSIVELY. **ALGE-TIMING** GMBH SHALL NOT BE HELD LIABLE FOR ANY DAMAGE WHICH RESULT FROM THE USE OF THIS PROGRAM, SUCH AS LOSS OF DATA, LOSS OF PROFIT, INTERRUPTION OF OPERATION, LOSS OF BUSINESS INFORMATION OR OTHER FINANCIAL LOSSES, IRRESPECTIVE OF THEM BEING ANTICIPATED.

THE USE SHALL BE ON OWN RICK EXCLUSIVELY. THE PROGRAM IS LICENSED "AS IS".

ALGE-TIMING GmbH

Rotkreuzstraße 39
6890 Lustenau
Austria

Telephone: +43 5577 85966

Facsimile: +43 5577 85966 4

E-Mail: office@alge-timing.com


Website: <http://www.alge-timing.com>

2 This is the way you use the Help function

This Help section offers extensive information on the functions of Time.NET 2. You can search the entire list of help subjects; you can look up the index or the help file for a word or a group of words.

Typographic conventions

The following table describes the most important conventions which are applied in the Help function.

Description	
<p>MENU > MENU COMMAND</p>	<p>Text written in this colour indicates:</p> <ul style="list-style-type: none"> ■ A menu element and a menu command, which you have to click on together. ■ A list of options which is opened when you click on the down arrow.
Text	The program marks informative texts in this font.
▶	Action steps are marked with this character. Carry out the action steps in the sequence indicated.
■	List items are marked with this character.
	This symbol is used to refer from the text to an image position or image area.

The navigation area of the Help section contains three register cards:

Table of contents

The book symbols are opened when they are clicked and the sections and subjects contained are displayed. Whilst navigating through the Help section, the table of contents will tell you immediately where you are and which other subjects are relevant.

Index

Contains an alphabetically arranged list of keywords. In order to find something in the index, either enter a keyword or use the slider. When the keyword is entered, the program will take you to the corresponding part of the index automatically. Double-click on the requested keyword in order to display the appertaining help subjects.

Search

You can search for every word or term in the Help section.

3 Time.NET 2 Installation

3.1 System requirements

- Operating systems supported:**
- Windows XP SP3 (x32 and x64)
 - Windows Vista SP1 or higher (x32 and x64)
 - Windows 7 (x32 and x64)

- Hardware requirements:**
- At least Pentium 1 GHz or faster
 - At least 512 MB RAM
 - At least 20 MB hard disk space for Time.NET 2
 - At least 850 MB (x32) or 2 GB (x64) hard disk space for Microsoft .NET Framework 4 and SQL Server Compact Edition 4.0
 - Recommended screen resolution: At least 1,280x1,024 or higher

- Requirements:**
- Windows Installer 3.1 or higher
 - Internet Explorer 5.01 or higher
 - [Microsoft .NET Framework 4](#)
 - [Microsoft SQL Server Compact Edition 4.0](#)
 - When using the time measuring device Timy / Timy2: [USB-Treiber](#)



By clicking the link, you can access the corresponding program packages directly.

3.2 Install Time.Net 2

Below please find the way to install Time.NET 2

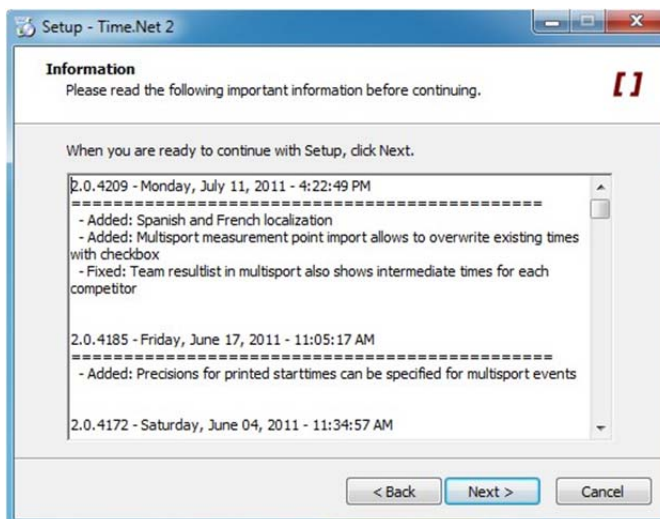


Please make sure that the *system requirements* are met.

- ▶ Starting the installation:
Double-click the Setup_TimeNet2.exe file.

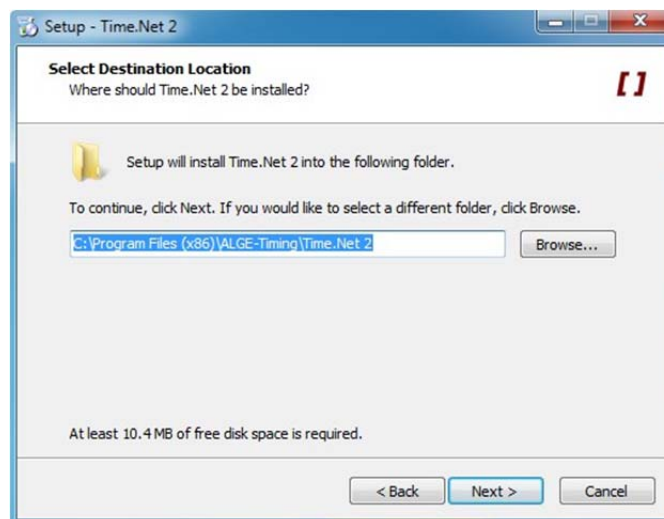


- ▶ Click on "Continue"

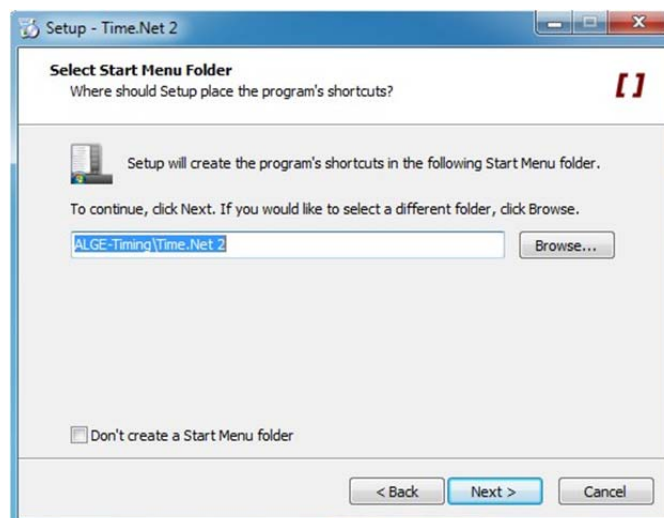


The information window displays current information on the version of Time.NET 2..

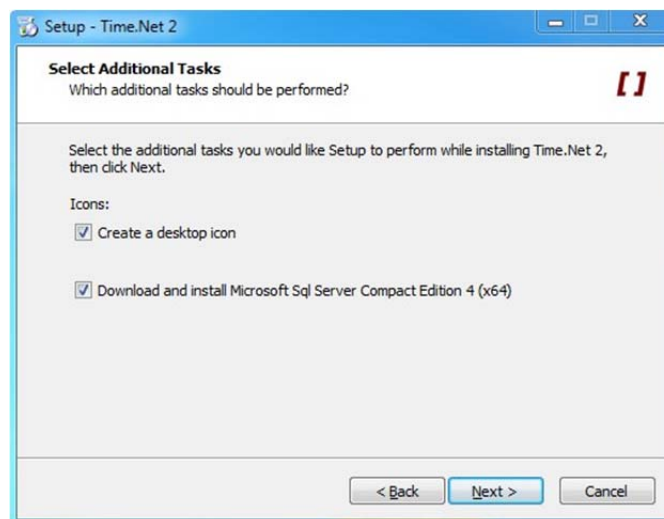
- ▶ Click "Continue".



- ▶ If you want to install the program in the suggested target folder:
Click on "Continue".
- ▶ If you want to install the program in a different target folder:
Enter the target folder in the input field directly or click on "Search" and selected the requested target folder.
Click on "Continue".



- ▶ If you want to create a program link in the suggested Start menu folder:
Click on "Continue".
- ▶ If you want to create a program link in a different Start menu folder:
Enter the Start menu folder in the input field directly or click on "Search" and selected the requested Start menu folder.
Click on "Continue".
- ▶ If you do not want to create a Start menu folder:
Click on the "Create no folder in the Start menu" checkbox.

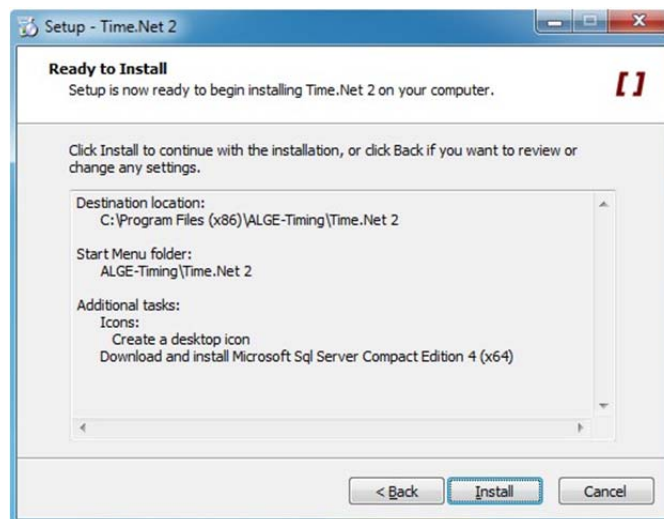


- ▶ If you want to create a desktop link:
Click on the "Create a desktop icon" checkbox



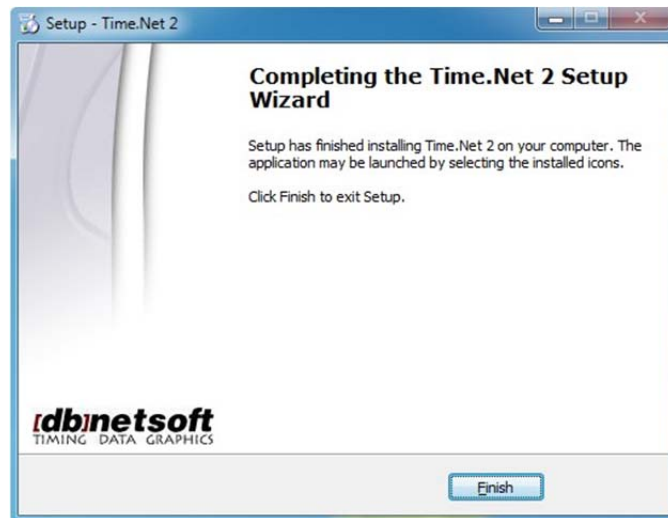
Optionally you can download and install Microsoft SQL Server Compact Edition 4 after completing the installation of Time.NET 2. Activate the checkbox, if you have not installed Microsoft SQL Server Compact Edition 4 on your system.

- ▶ Click on "Continue".



An overview of the settings made is displayed.

- ▶ Changing the settings:
Click on "Back" and change the settings.
- ▶ Execute the installation:
Click on "Install".



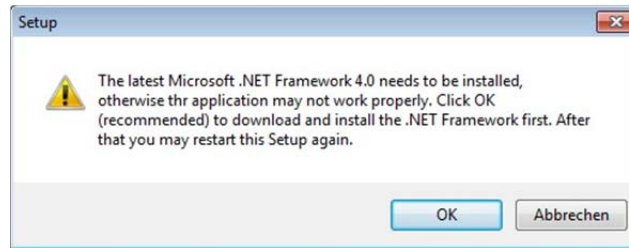
- ▶ Click on "Finish".



Time.NET 2 has been installed successfully now.

3.3 Solving problems during the installation

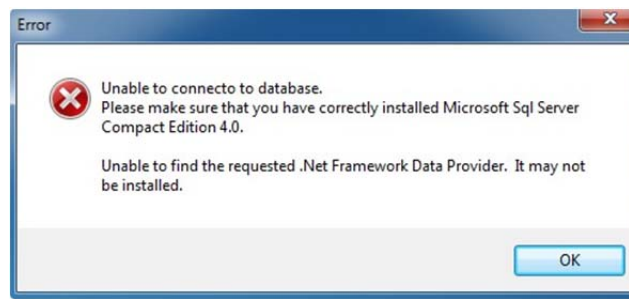
During the installation, this window will be displayed:



Microsoft .NET Framework 4.0 is not installed on your system.

- ▶ Install Microsoft.NET Framework 4.0 - see [System requirements](#).
- ▶ Restart the installation of Time.NET 2 - see [Installing time.NET 2](#).

During the start or the execution of Time.NET 2, these windows will be displayed:



Microsoft SQL Server Compact Edition 4.0 is not installed on your system.

- ▶ Install Microsoft SQL Server Compact Edition 4.0 - see [System requirements](#).





Time.NET 2 is blocked by the Firewall. Time.NET 2 saves the data in a database using an internal network interface of the program.

- ▶ Set Time.NET 2 as a trustworthy program in the Firewall and permit the network traffic.

