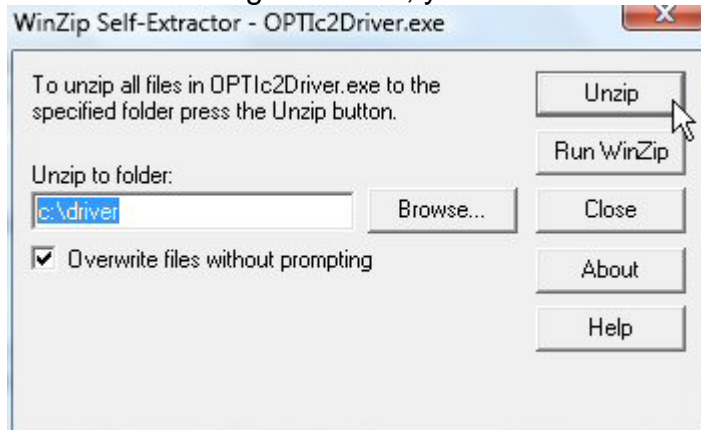


OPTIc2 Driver installation (Windows 7)

1. Put a **ALGE** CD in your PC.

If you do not have an **Alge** CD, you have to download it from the **Alge** Homepage www.alge-timing.com.

After downloading the driver, you have to extract it: press unzip

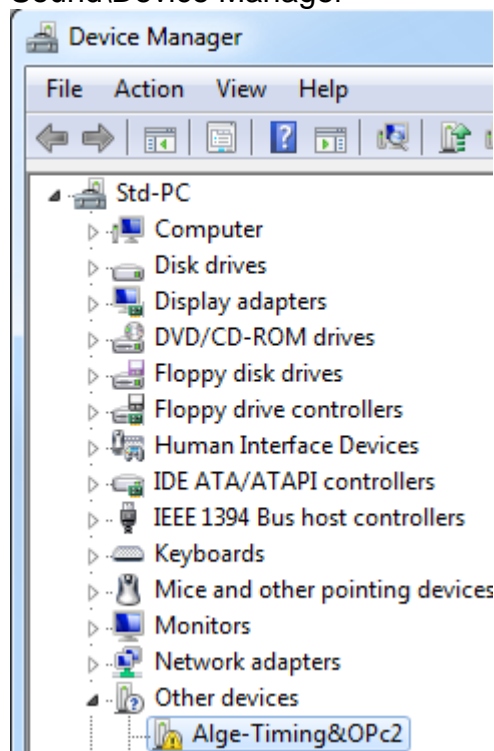


2. Connect the OPTIc2 with your PC and connect the power supply.

Windows 7 x86: Please wait until Windows finished searching for the driver. If you have an Alge-CD, Windows should find the driver automatically.

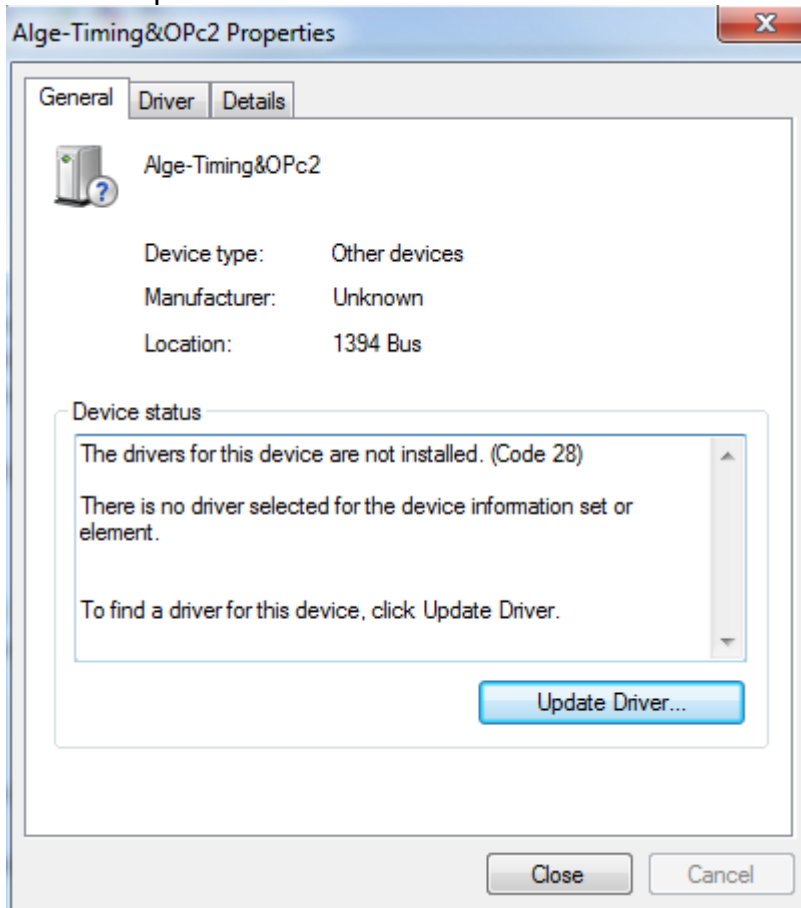
Windows 7 x64 resp. on install failure: Continue with 3.

3. Open the device manager by pressing start\Control Panel\Hardware and Sound\Device Manager

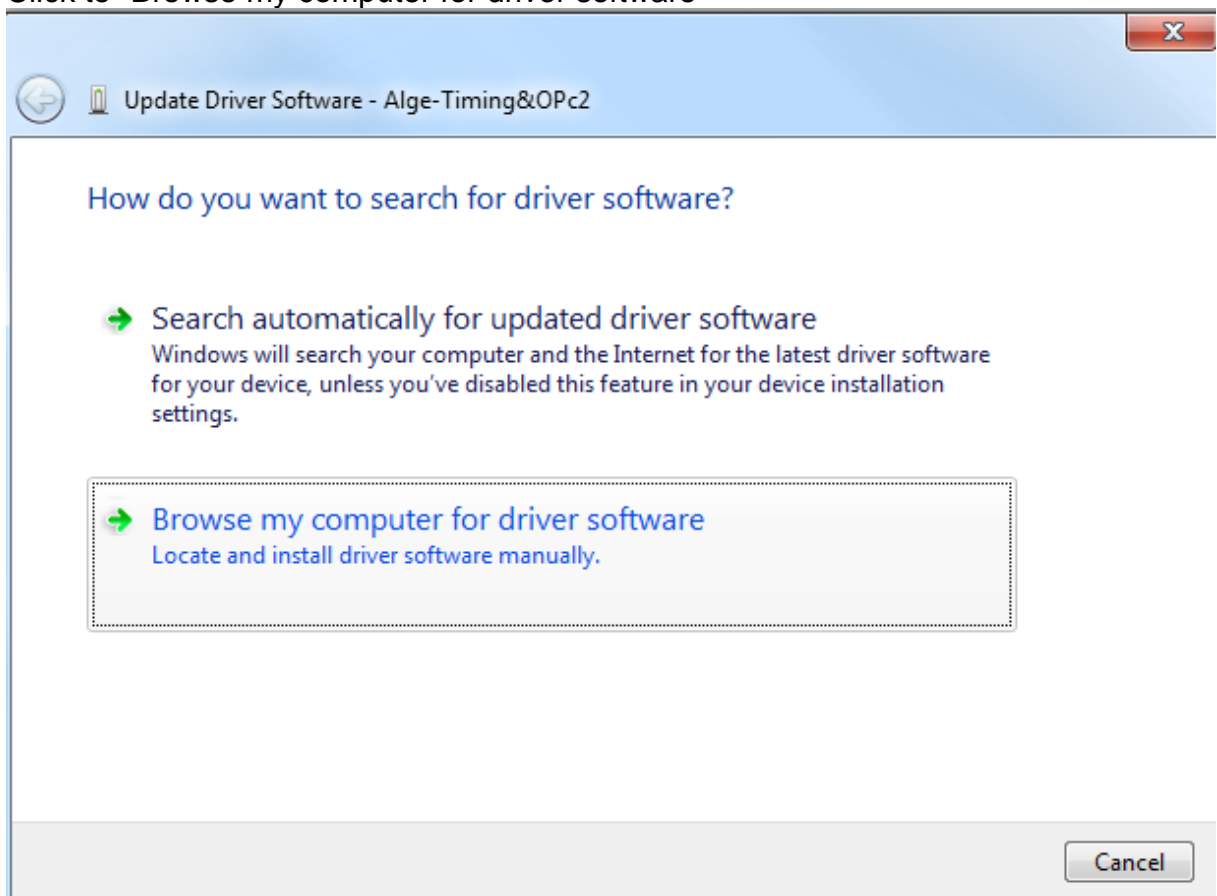


Make a double-click on “Alge-Timing&OPc2” (or right-click and properties)

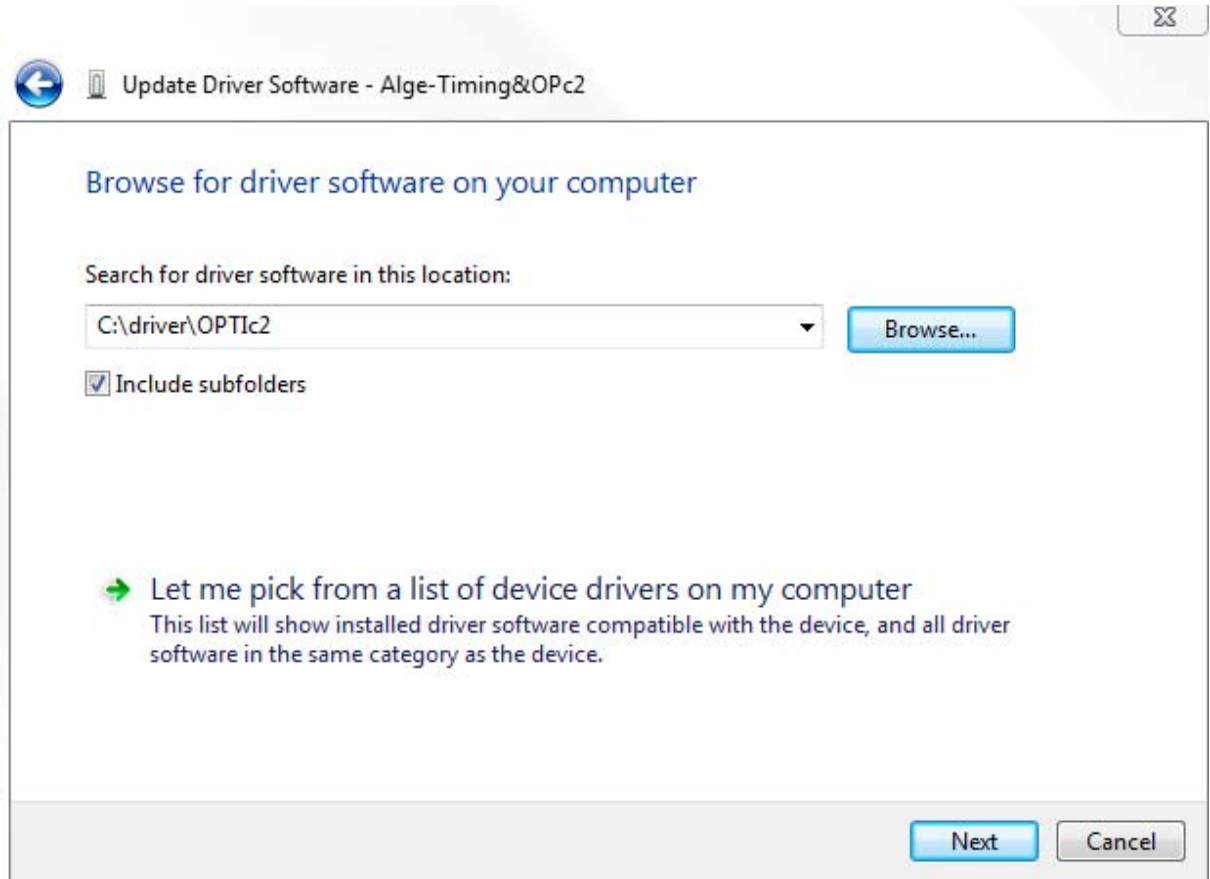
4. Click to “Update Driver”



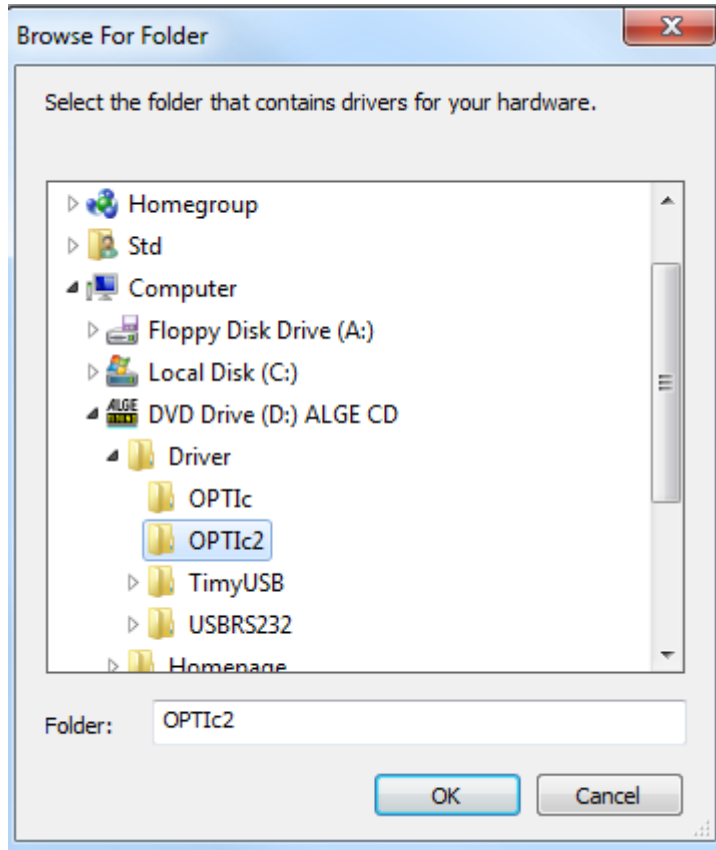
5. Click to “Browse my computer for driver software”



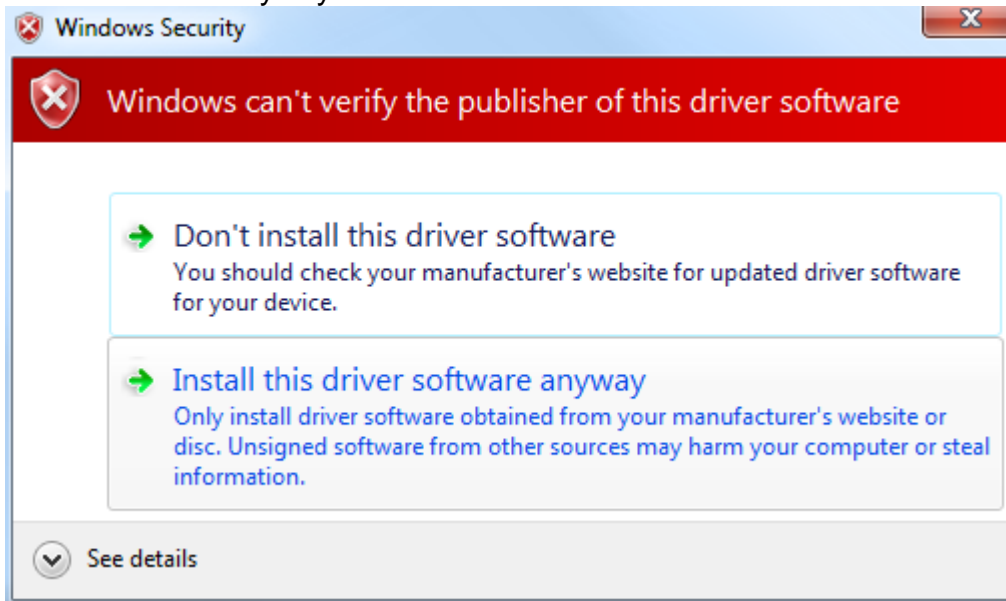
6. Click to "Browse"



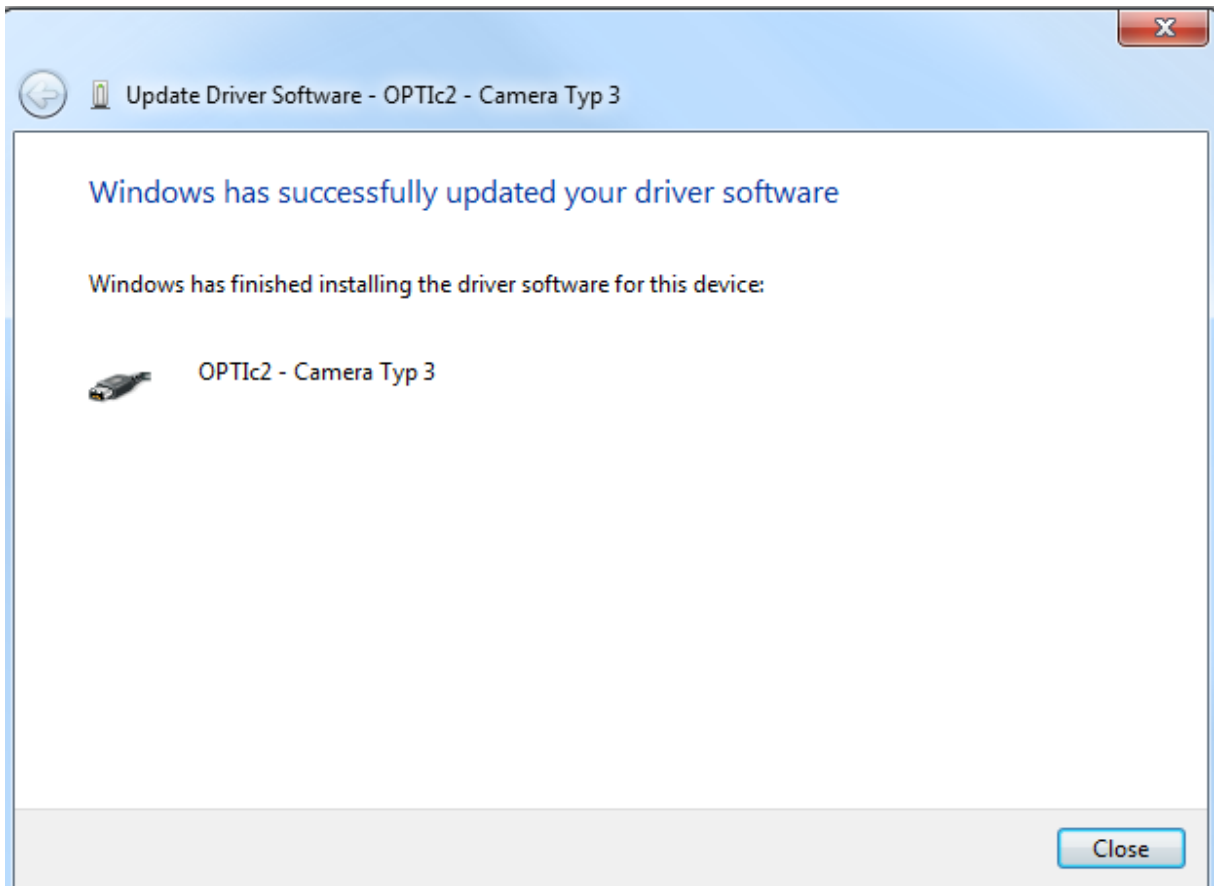
7. Then choose the driver location and click "ok" and "next"



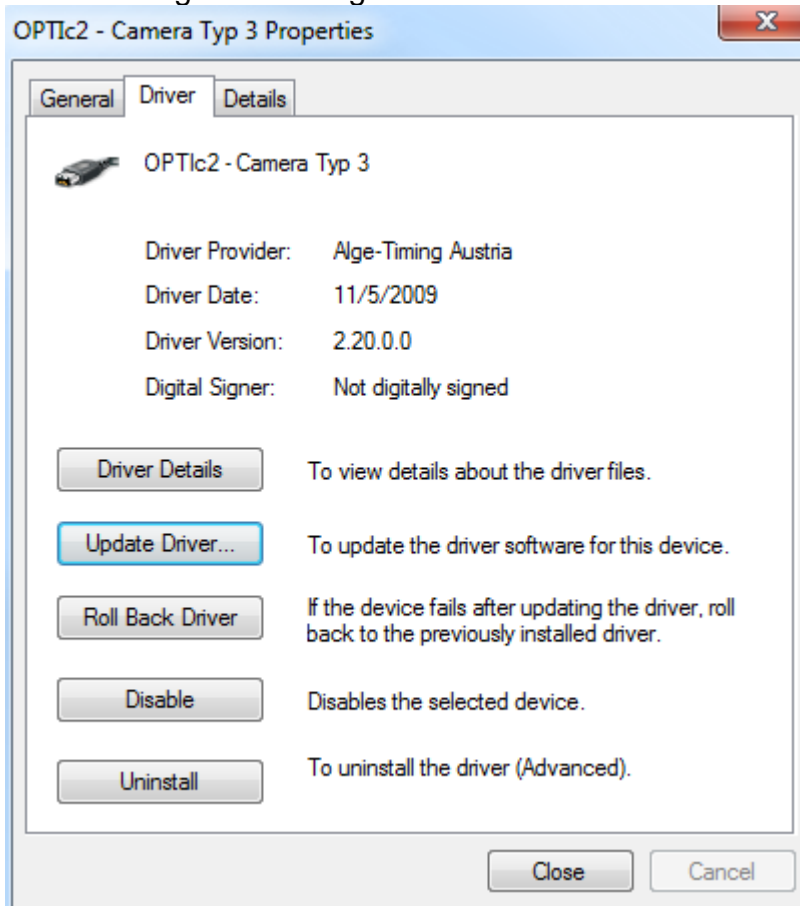
8. Please confirm that you really want to install this driver and click to “Install this driver software anyway”



9. Click “Close”



10. You should get a message that the driver is correct installed. Click to “Close”



11. You can check now if the driver is correct installed.

