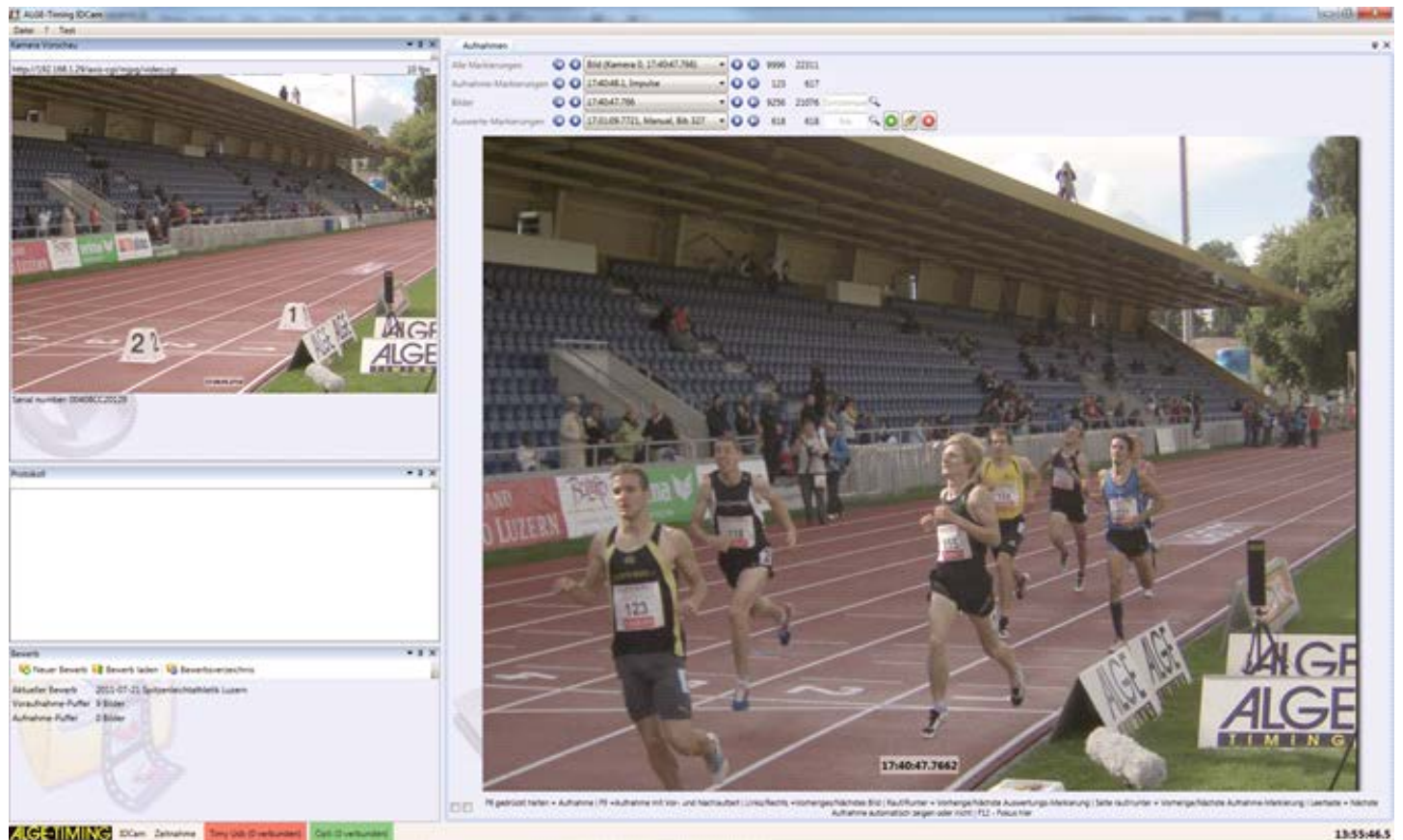


ALGE *FINISH PROTOCOL* ALGE

TIMING IDCam **TIMING**

The IDCam is a reliable and simple solution to issue a protocol of the finish arrival with high resolution pictures. Each finish line crossing of an athlete produces several pictures that are stored with the time of day on a PC.



It is possible to connect the IDCam-system with an **ALGE-TIMING** timing device. This allows an automatic recording controlled by the finish sensor (e.g. photocell). The recording duration for each finish impulse is adjustable (recording time before and after impulse). If the impulse is transmitted from the timing device with a start number (bib) then the number is also stored with the picture.

With the recorded pictures you can verify the finish arrival. It allows you to correct missing times or start numbers (bib).

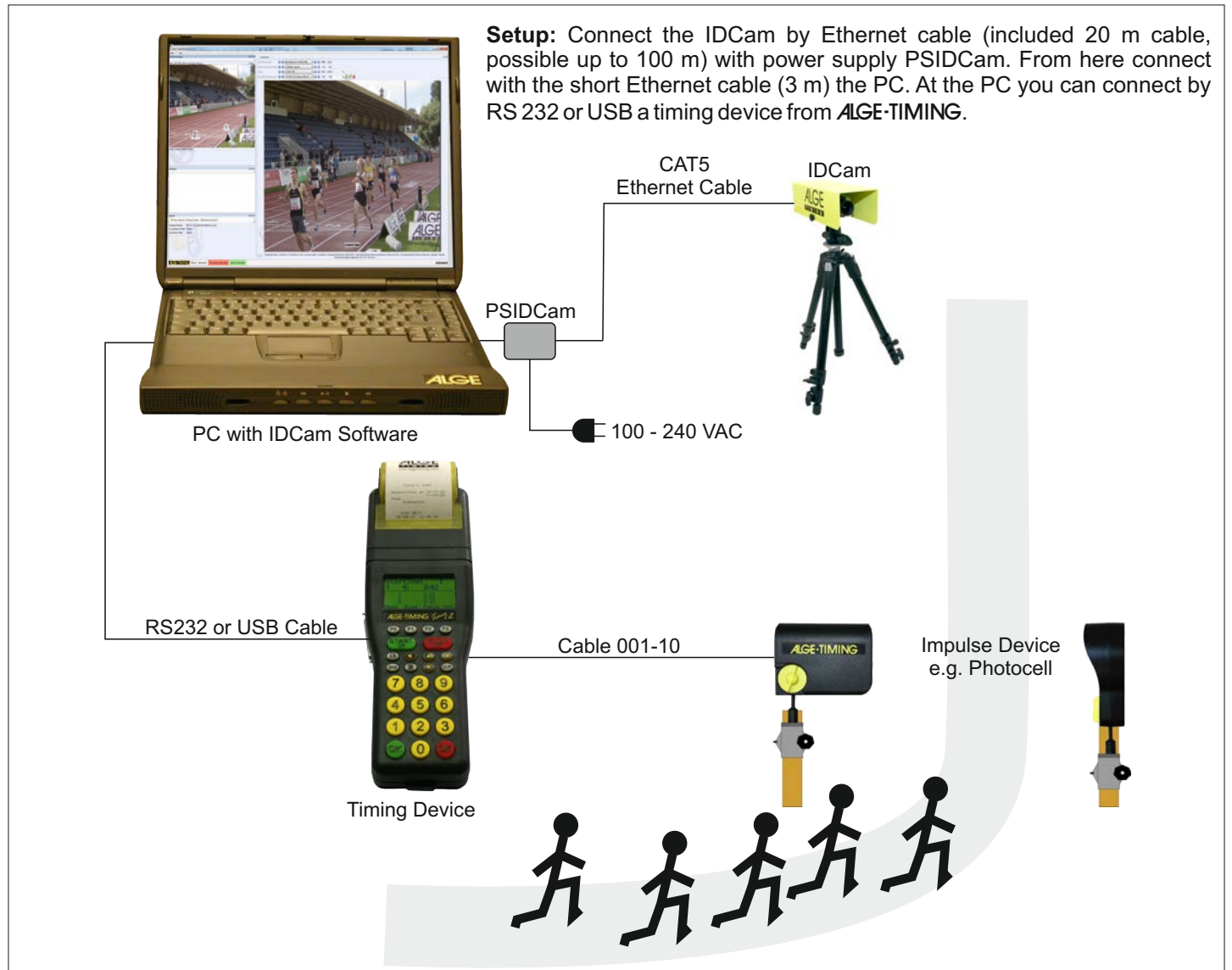
The IDCam is an ideal addition to any timing system of **ALGE-TIMING**.

Pictures:	up to 30 pictures per second
Resolution:	2048 x 1536 pixel - JPG Format
Connections:	Camera IDCam to PC: Ethernet CAT5 cable, up to 100 m
	Timing device to PC: RS232 or USB
Recording Time:	endless, depending on the hard disk space of the PC
PC System Software:	Windows XP, Windows Vista or Windows 7
Power Supply:	PSIDCam: 100 - 240 VAC



ALGE FINISH PROTOCOL ALGE

TIMING IDCam TIMING



Scope of Delivery:

- Megapixel Network Camera with 3MP (2048x1536 pixel)
- Zoom-Lens 4 - 8 mm for camera
- 3 m CAT5 cable
- 20 m CAT5 cable
- PSIDCam power supply
- Software (on CD)

Accessory(optional):

- Weather Protection WP-IDCam
- Tripod TRI 128 or TRIMAN
- Ball Head

Supported Timing Devices:

- TdC8001
- TdC8000
- TdC4000
- Timy2
- Timy
- Comet
- Timer S4
- Timer S3
- Coming soon: OPT1c2
- manual recording mode through PC-keyboard



IDCam with Lens



CAT5 cable with 20 m and 3 m



PSIDCam



Weather Protection WP-IDCam



Tripod TRI128



Ball Head